

RAZE GE200

PN: BTVGCBHOEFOKHCW01B
EAN: 6422956014049

Specifications

Battery Model	GE20012KH
Voltage	12V
Power (1.65V/cell@15min)	560 W/cell
Type	Valve regulated lead–acid (VRLA), 6 cell, GEL - maintenance free
Designed Floating Life	Up to 9 years (25°C)
Nominal Operating Temp. Range	25°C ± 3°C
Terminal	T11 (M8 bolt)
Construction	
Container & Cover	ABS
Safety valve	EPDR
Terminal	Copper
Internal resistance	Full charged at 25°C ≤ 3mΩ
Self Discharge (25°C)	after 3 month storage 92% after 6 month storage 84% after 12 month storage 65%
Capacity affected by temperature	
40°C	103%
25°C	100%
0°C	90%
Charge Voltage (25°C)	
Cycle use	13.5V~13.8V max. Current: 60A
Float use	13.5V~13.8V
Charging Current	Max. 50A
Charging Power	Max. 600W
Discharging Specifications:	
Discharging Current	Max. 100A
Discharging Power	Max. 1200W
Minimum Discharge Level	10%
End-Of-Discharge Voltage	10.5V



Completely sealed and maintenance-free



Excellent charging and re-charging



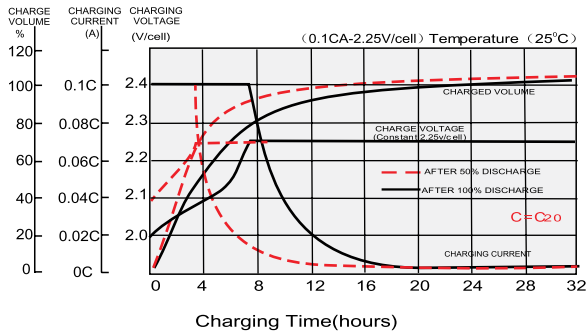
Long Life & low self-discharge design

- Solar, wind energy storage
- Telecommunication systems
- Network connection equipment of communication system
- Power system of special network or local area network
- DC Power Supply
- Railway and marine systems
- Marine equipment
- Medical equipment
- Electrical vehicle

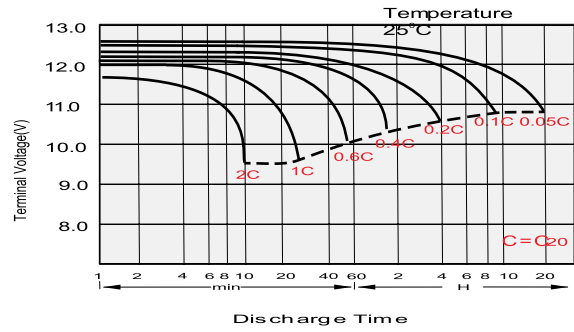
Physical

Without Terminal	522 x 242 x 216 mm
With Terminal	522 x 242 x 240 mm
Product Weight	70 kg

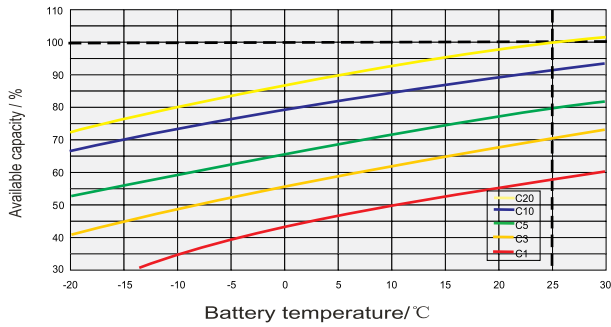
Constant voltage charging characteristic (0.25 CA, at 25°C)



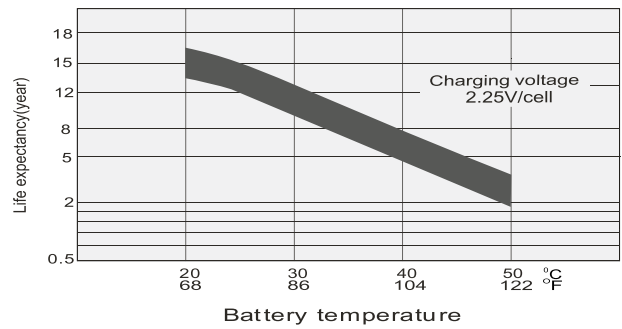
Discharge Characteristics



Temperature Effects in Relation to Battery Capacity

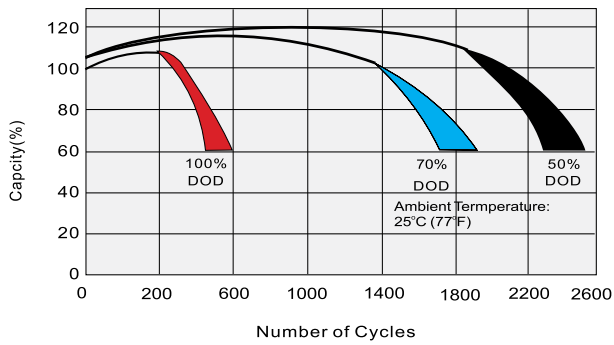


Effect of Temperature on Long Term Float Life

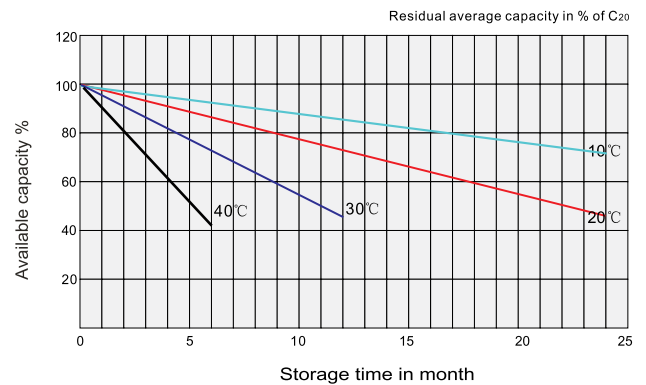


Cycle Life in Relation to Depth of Discharge

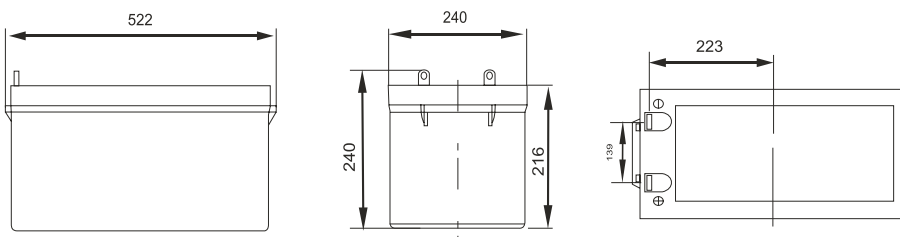
Testing condition
Discharging: current 0.17C (FV 1.7V/cell);
Charging: current 0.25C max, voltage 2.45V/cell;
Charging volume: 125% of discharged capacity.



Self Discharge Characteristics

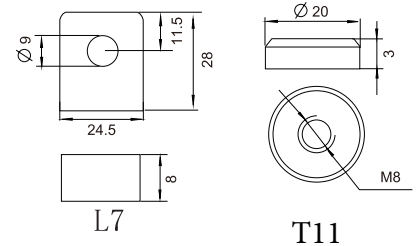


Dimensions (mm)



M8 Terminal Dimensions (mm)

Terminal
Unit: mm [inches]





Constant Current Discharge Characteristics (A), 25°C

F.V/Ti	20min	30min	60min	2Hr	3Hr	5Hr	8h	10Hr	20Hr
1.80V/cell	193.8	148.4	93.6	58.2	43.9	36.2	21.2	22.2	11.0
1.75V/cell	217.8	163.2	100.2	61.7	46.4	38.0	21.9	23.5	12.2
1.70V/cell	234.6	174.8	106.0	65.4	48.3	39.7	22.5	24.0	12.3
1.65V/cell	244.2	181.6	110.0	67.1	49.9	41.5	22.9	24.3	12.4
1.60V/cell	264.6	194.4	116.8	69.8	51.9	43.7	23.3	24.6	12.6



Constant Wattage Discharge Characteristics (W), 25°C

F.V/Ti	20min	30min	60min	2Hr	3Hr	5Hr	8Hr	10Hr	20Hr
1.80V/cell	366.1	283.3	181.3	113.3	85.8	60.6	42.0	36.3	19.9
1.75V/cell	406.9	308.7	193.1	119.6	90.4	65.7	43.3	37.0	20.3
1.70V/cell	433.5	327.8	203.1	126.2	93.9	67.5	44.5	37.8	20.5
1.65V/cell	446.2	337.0	209.6	128.8	96.4	69.7	45.1	38.2	20.7
1.60V/cell	478.1	357.3	221.3	133.4	99.8	71.5	45.8	38.9	21.0



Logistics

	Carton Box Size	530 x 250 x 277 mm
	Pieces in the Carton Box	1 pc / ctn
	Net & Gross weight / CTN	N.W. / G.W.: 70 kg / 72.5 kg

